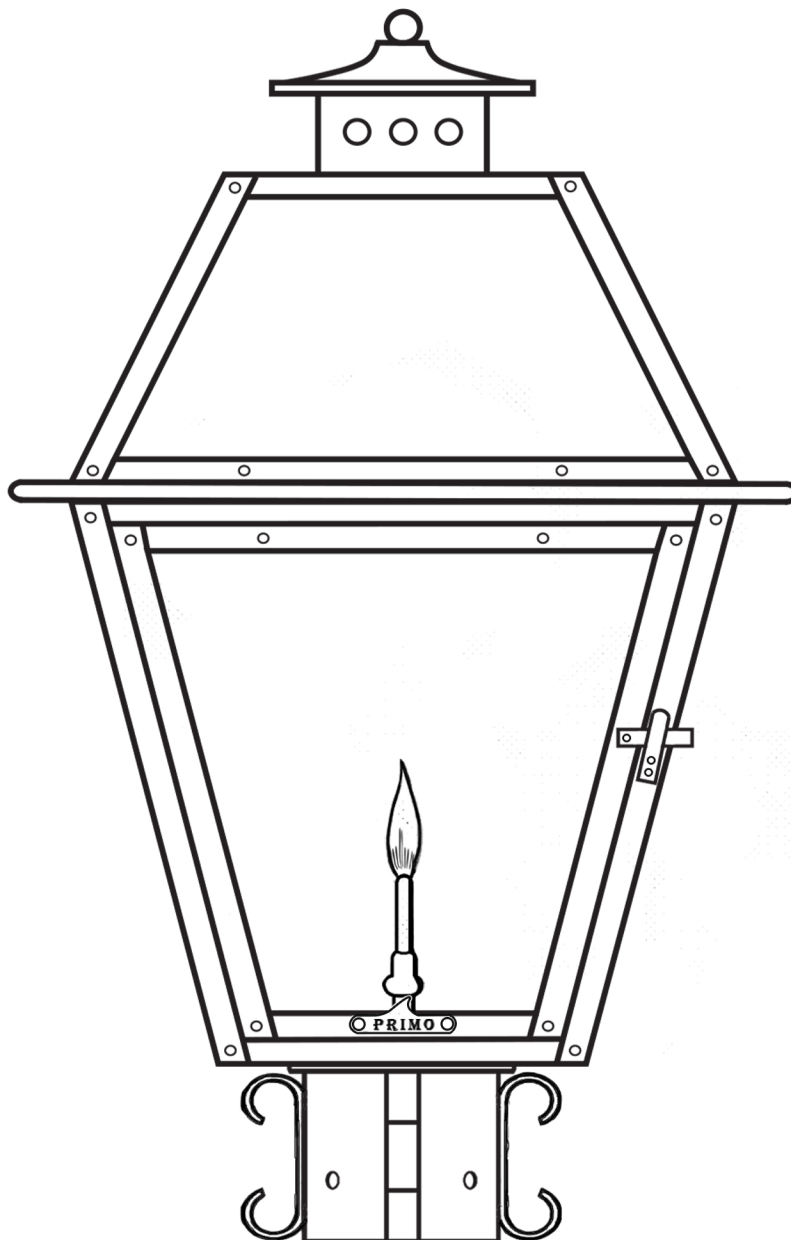
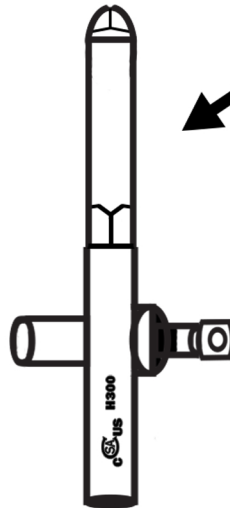




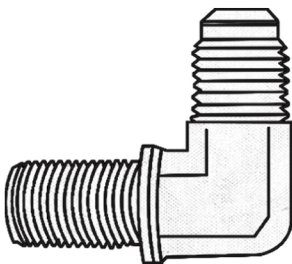
## POST MOUNT INSTALLATION



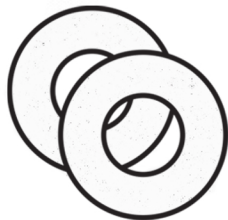
**Your gas lantern comes with a valve included.**



**It comes equipped with a 90 degree fitting for wall mounting. Remove the flare nut - save it to use with the flare fitting included with the post mount kit. Discard the 90 Degree fitting.**



**90 Degree Fitting**



**Washers**

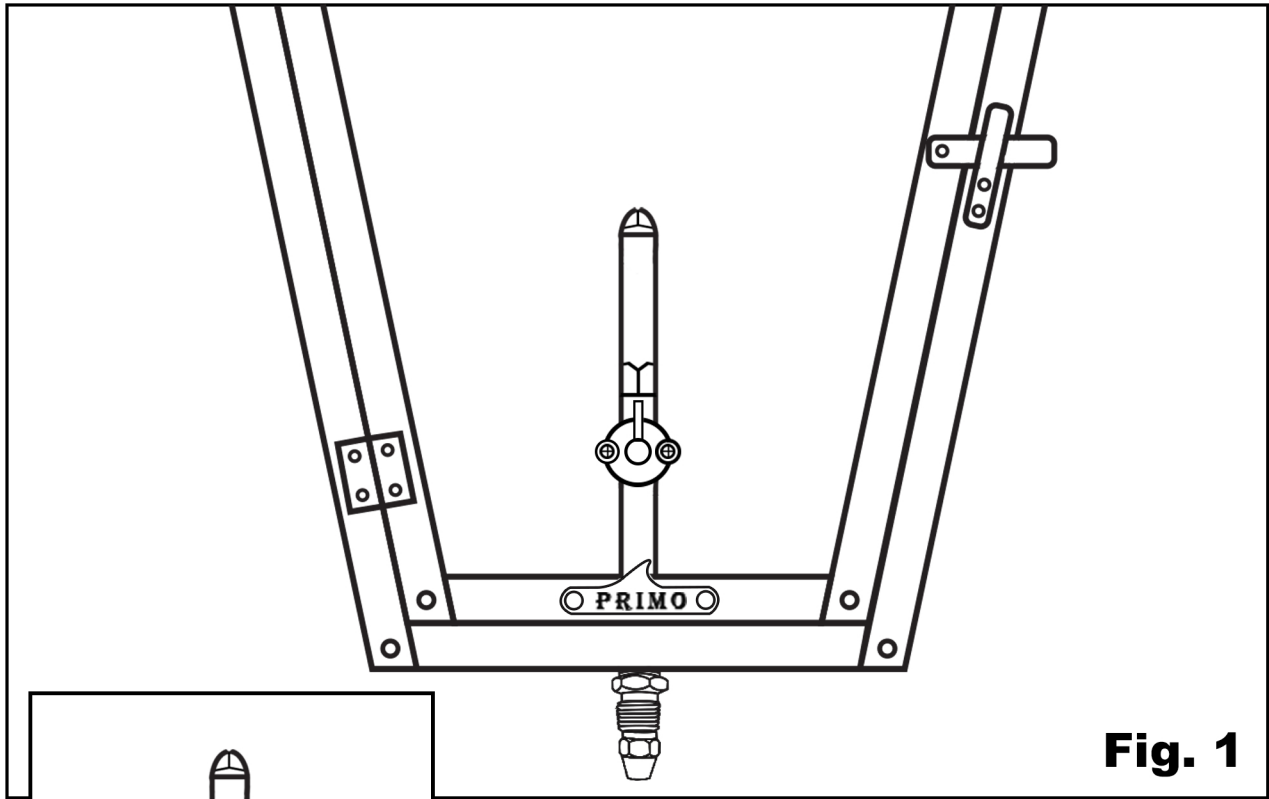


**Flare Nut**

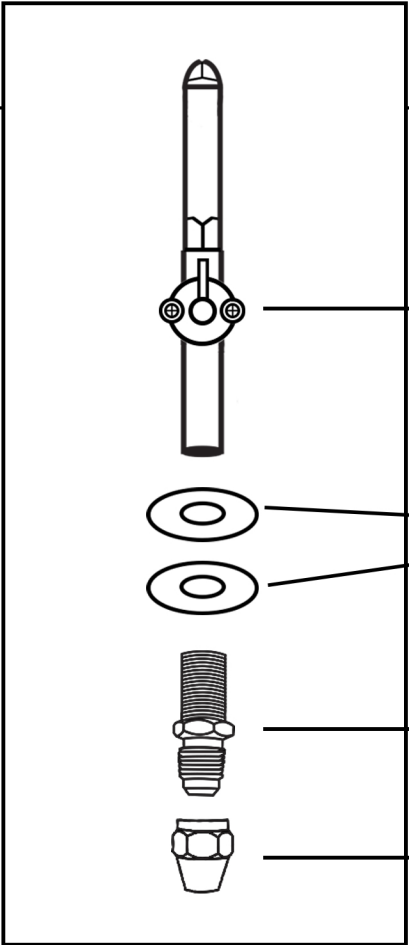


**Flare Fitting**

**1. Using the Flare Fitting, install the valve in the lantern as shown in Fig. 1.**



**Fig. 1**



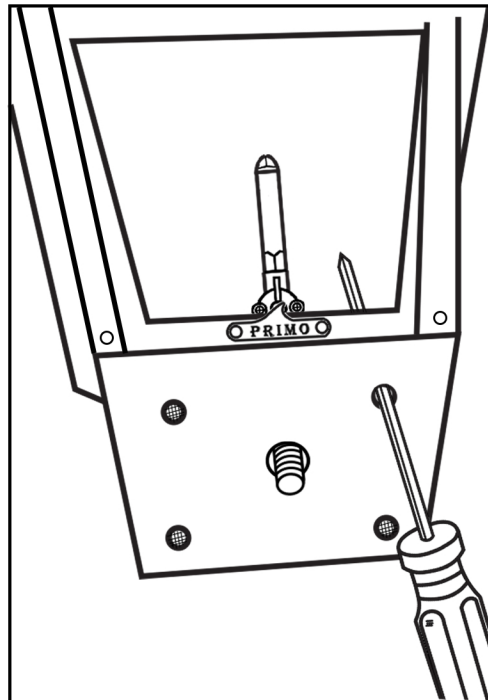
**Valve**

**Washers**

**Flare Fitting**

**Flare Nut**

**2. With a screwdriver, press through the wire mesh over the mounting holes at the bottom of the lantern.**



**3. Place Mounting Plate inside the lantern at the bottom.  
(Electric Lanterns come with plate already installed)  
Attach the Post Mount to the bottom of the lantern  
using the nuts & bolts provided.**

